

SLC-090T

Diffusion LED Channel

Safety Instruction and Warning

WARNING:

READ CAREFULLY BEFORE INSTALLING.

Installation should only be conducted by a qualified electrician in accordance with NEC and any relevant local building codes.

Risk of fire or electric shock. Fixture installation requires knowledge of luminaires electrical systems. If not qualified, do not attempt installation. Contact a qualified electrician.

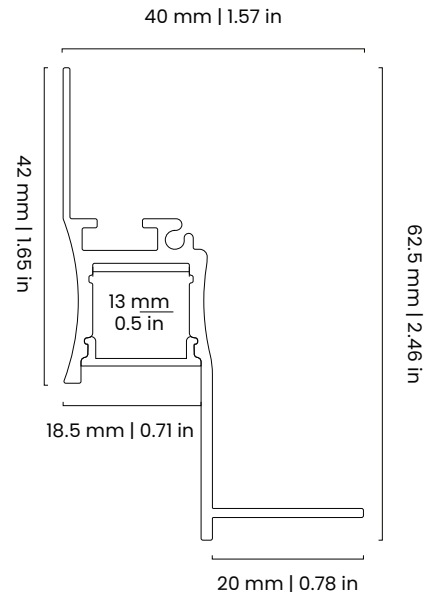
Be certain electrical power is OFF before and during installation and maintenance.

Fixtures must be connected to a wiring system with an equipment-grounding conductor.

Make sure the supply voltage is the same as the rated luminaire Fixtures voltage.

Wear gloves and safety glasses at all times when removing luminaire from carton, installing, servicing or performing maintenance.

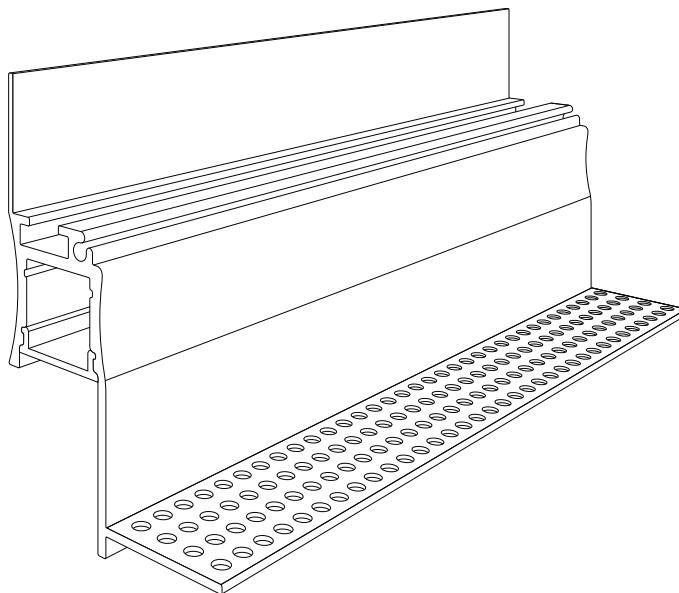
Diagram



Description

The SLC-090T Diffusion Trimless Wall Flange Channel is a trimless channel made of anodized aluminum, with an opal polycarbonate lens that comes complete with two endcaps.

Shop Drawing



SLC-090T

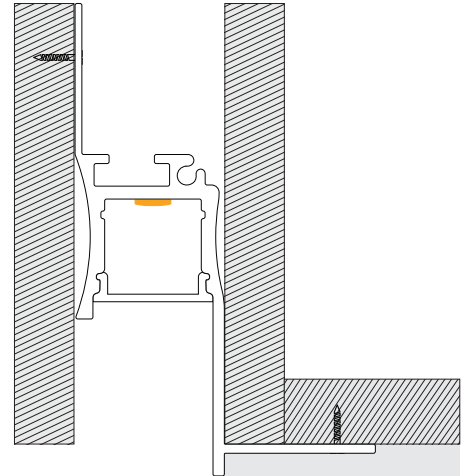
Diffusion LED Channel

Installation Types

Notes:

****If installing outside, seal hole where power feed exits fixture with silicone****

****Fixture should be built and installed based around the lengths of ribbon and power feed locations****



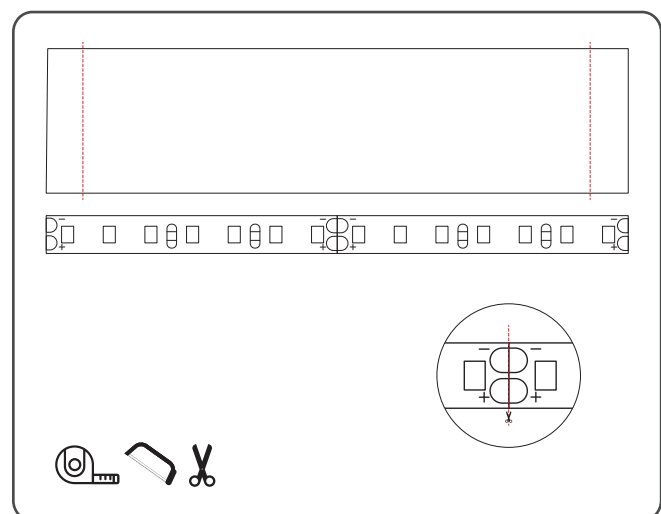
Recess/Flush Mount

Step 1

Determine ribbon length and channel length, cutting to desired lengths as required.

You can cut channel and lens at the same time to ensure they line up and are the same length.

Cut angles into ends of channel if required. (Such as 45 degrees on two ends to make a 90 degree turn).

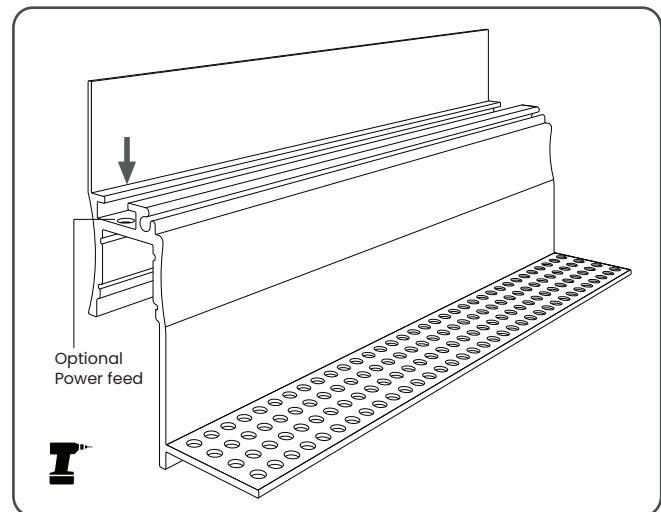


SLC-090T

Diffusion LED Channel

Step 2

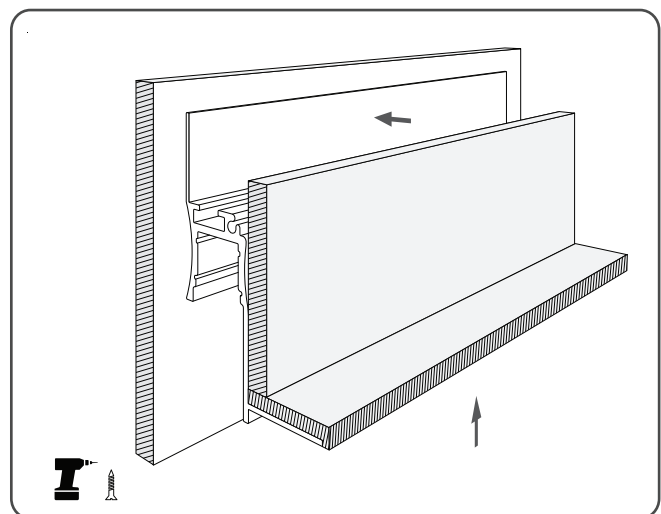
If feeding power from other side of the fixture, drill hole in desired location prior to installation.



Step 3

Install channel into drywall or wood recess, ensuring straight lines and proper length.

Don't forget a pull-string for power feed if required.

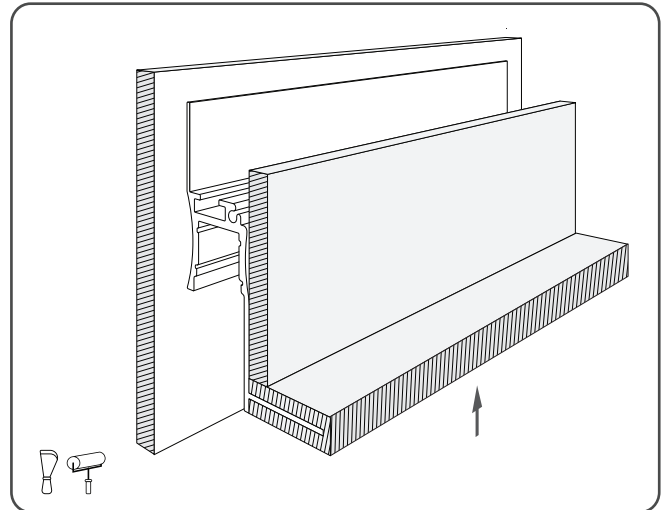


SLC-090T

Diffusion LED Channel

Step 4

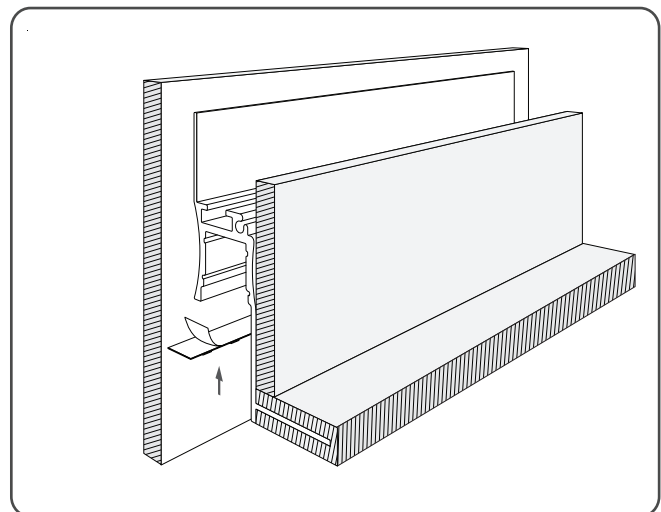
Finish trim with either drywall mud, veneer, or other options.



Step 5

Install ribbon using pre-cut pieces and/or adaptors, ensuring power feed is at appropriate end. Peel off the 3M double sided tape and stick to the inside of the channel.

If using outdoor ribbon, use silicone or construction adhesive to adhere to the channel.



SLC-090T

Diffusion LED Channel

Step 6

Test fixture and install lens by snapping into place, starting at one end and working down the length of the fixture.

Finished!

