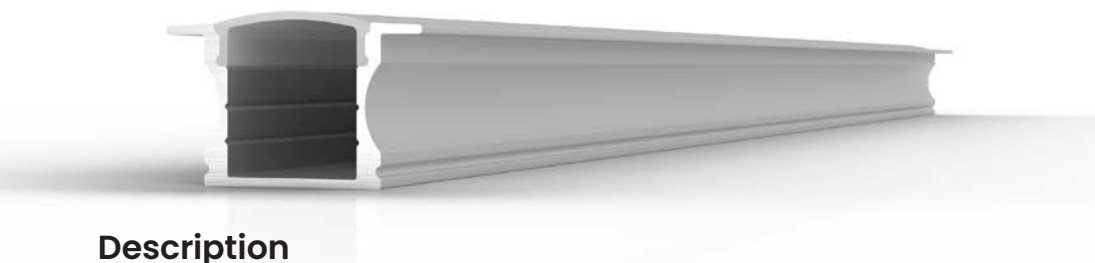




SLC - 003R

Diffusion LED Channel



Description

The Diffusion SLC-003R is a recessed, anodized aluminum LED extrusion that comes complete with three clear mounting clips, two endcaps, and an opal polycarbonate lens.

Note: Extra clips and endcaps are available by request

Application

- Drywall
- Wall surface
- Furniture
- Shelving
- Kitchen cabinets
- Recessed

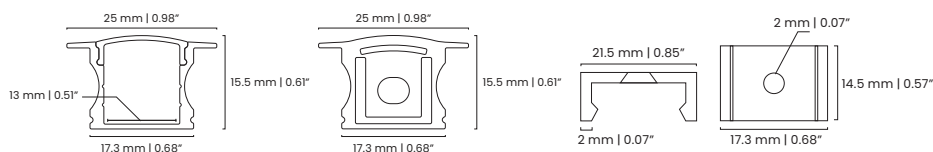
Specifications

CHANNEL	Anodized Aluminum Extrusion
LENS	Opal Polycarbonate, Heat Resistant, UV Stable and Shatter Resistant
LENGTH	8 ft (2.44 meters)
COLOR	Silver (Standard), White, Black, Antimicrobial Coating and Custom RAL
MOUNTING CLIP MATERIAL	Plastic
ENVIRONMENT	Indoor and Outdoor
WARRANTY	5 Year Warranty

Ordering Information

ORDERING CODE	COLOR
SLC - 003R	XX
	Blank (Silver)
	WH
	BK
	Custom RAL

Diagram



diffusionlighting.com
1-(866)-RJCROSS (752-7677)

